

RESIDENTIAL ACCOMMODATION

ALL YEAR ROUND RESIDENTIAL ACCOMMODATION

Regent Oxford offers both **standard** and **ensuite residences** which are situated in residential areas all around Oxford. They are all well linked to the city centre and the school by bus routes.

Whilst some of our residences are owned by the colleges belonging to the University of Oxford, we also work with a few student houses under private management.

Décor will vary between the different residences, ranging from traditional English houses to more modern purpose-built apartment blocks, however they are all self-catered with common areas in which to study, relax or prepare and eat food.

LOCATION

The standard and ensuite residences are between 10 to 20 minutes by bus from Regent Oxford. You will also find supermarkets, parks, pubs and restaurants, as well as a few other shops in these vibrant areas.

For more information, visit our accommodation webpage:
www.regent.org.uk/learn-english/accommodation/oxford

YOUR ROOM

In your bedroom you will have a wash basin, a bed with pillows and a duvet, a desk, a desk light, a wardrobe and a bedside table. With the ensuite option you will have your own private bathroom and with the standard you will share a bathroom with three or four other students.

SERVICES AND FACILITIES

The rooms are cleaned once a week, with bins emptied daily. Bedding and towels are provided and changed weekly. The kitchen is shared with other students and the residence also has common areas where students can socialize, such as the living room and dining area. There's also a utility room where you can wash, tumble dry and iron your clothes. Wireless Internet is available in the residence, you just have to ask for the password. You can also use the Wi-Fi connection at the school.

ARRIVAL

Depending on the residence you will be assigned to, there are different ways you will be welcomed. Please let us know how and when you will arrive in Oxford so that we are ready to welcome you with your key.

ACCOMMODATION

The residential accommodation is very popular with our clients so please book well in advance. Extra nights are subject to availability.

Fees per week

Standard room	£414	Extra night	£63
Ensuite room	£472	Extra night	£72

TAXI TRANSFER FEES

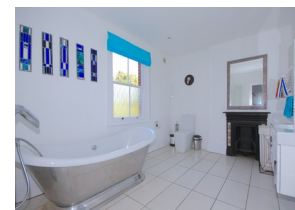
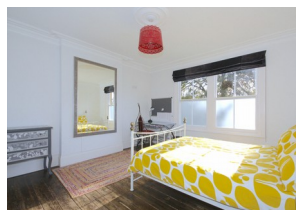
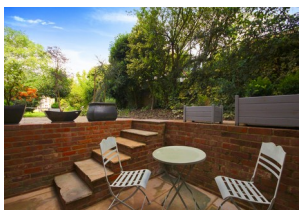
one way, per person

London Gatwick	£204
London Heathrow	£158
London Stansted	£196
London Luton	£193
London City	£236
Birmingham Int.	£158

OUR COURSES

Fees per week (for 12+ weeks)

English World	From £366
Exam Preparation	From £366
English World ClasSIX	From £562
Individual Tuition	From £1392



For more details about our 2019 courses and accommodation options contact us on **+44 1865 515 566** or email us at oxford@regent.org.uk and visit our website www.regent.org.uk/oxford

For more information, email Regent Language Training for your free brochure or call our team who will be happy to help.

Regent Oxford, 90 Banbury Road, Oxford, OX2 6JT, UK

Tel: +44 (0)1865 515 566 Fax: +44 (0)1865 512 538 www.regentoxford.org.uk