

3 Full-Time General English

Our full-time General English course focuses primarily on grammar in the morning classes and skills (speaking, listening, reading, writing) in the afternoon classes. Throughout the day you will also have the opportunity to widen your vocabulary and improve your pronunciation.

- The main focus is on communication with plenty of opportunity to practise using new grammar and vocabulary
- Lessons are dynamic with a variety of activities
- We encourage pair-work and discussion to improve fluency and confidence
- All course books and materials are included in the fees (exam fees are not included)
- A test at least every 2 weeks and regular homework so you can monitor your progress

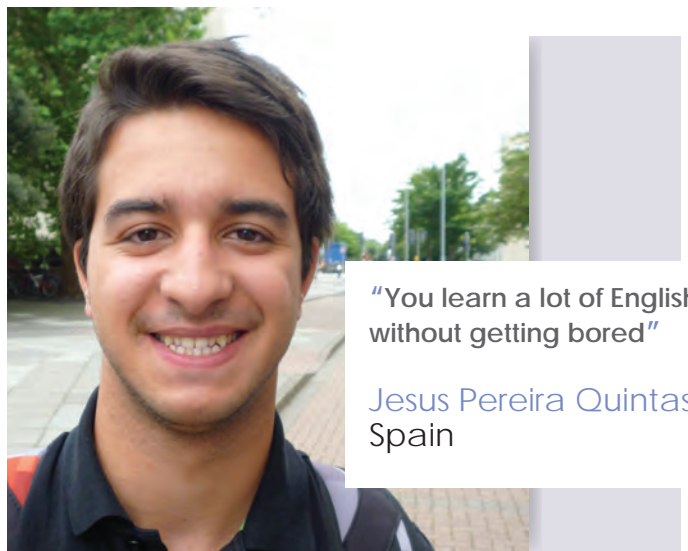


- Focus on grammar and vocabulary extension in the morning, with lots of spoken practice and an opportunity to improve skills
- Focus on English for 'everyday situations' in the first afternoon class, with lots of speaking, listening and pronunciation practice. A chance to learn useful phrases and increase your confidence in real social situations
- Focus on 'everyday themes' in the second afternoon class, with a chance to improve the 4 main skills (reading, writing, listening and speaking) through a variety of multi-media and authentic materials



FACT CHECK

- Minimum age: 18 • Average age: 23
- Maximum class size: 12
- 22.5 hours (60 minutes) per week, plus 5-10 hours self-access
- Start any Monday • Minimum 2 weeks • All levels



"You learn a lot of English without getting bored"

Jesus Pereira Quintas, Spain

8:30 - 9:15	9:15 - 10:30	10:30 - 10:45	10:45 - 12:00	12:00 - 1:15	1:15 - 2:30	2:30 - 2:45	2:45 - 4:00	4:00 - 5:30
Optional self-access	Grammar/ Vocabulary Skills/ Pronunciation	Morning coffee break	Grammar/ Vocabulary Skills/ Pronunciation	Lunch/ Optional supervised self-access	Everyday English functions Everyday English functions	Afternoon coffee break	Everyday English themes Speaking/ Listening	Optional supervised self-access

No lessons on Friday afternoons, leaving students free to do supervised self-access study. Alternatively, students can choose to do 1:1 classes at this time (at extra cost). Exact starting and finishing times may change, but there will always be 22.5 hours of taught classes per week (except where there is a public holiday).